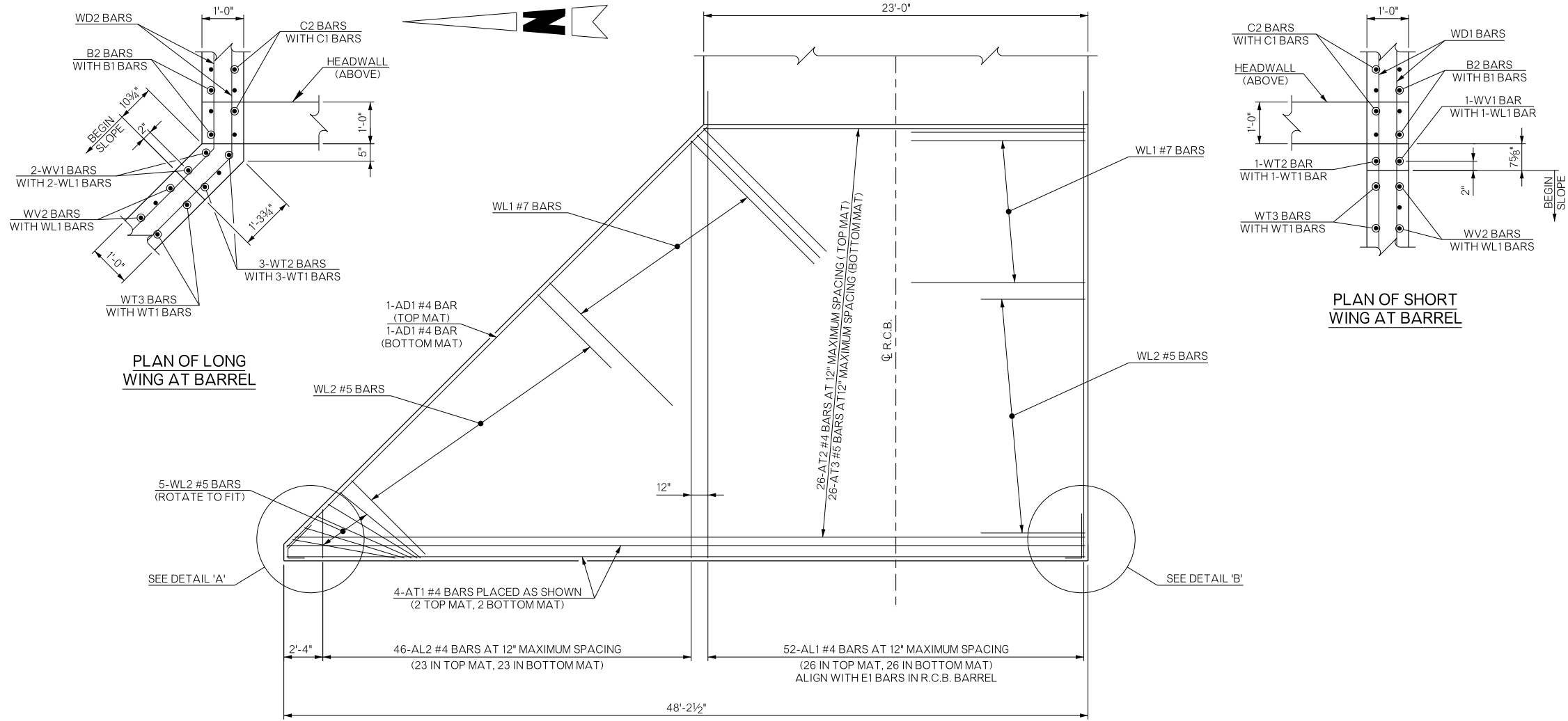


REVISIONS		
REV. NO.	DESCRIPTION	DATE



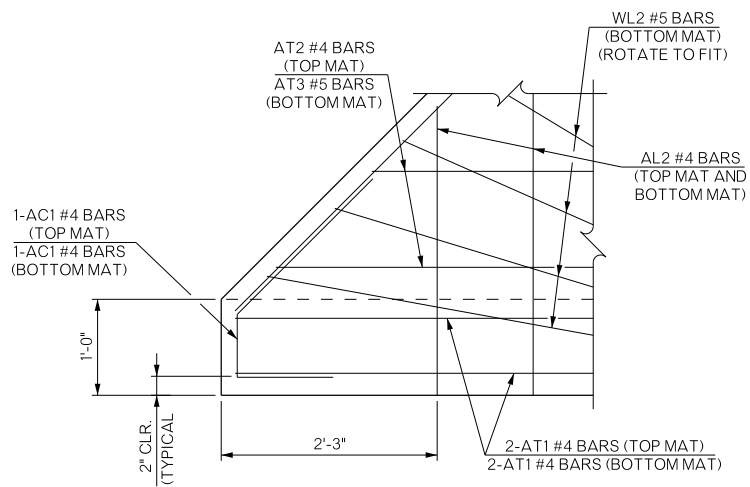
PLAN OF LONG WING AT BARREL

PLAN OF SHORT WING AT BARREL

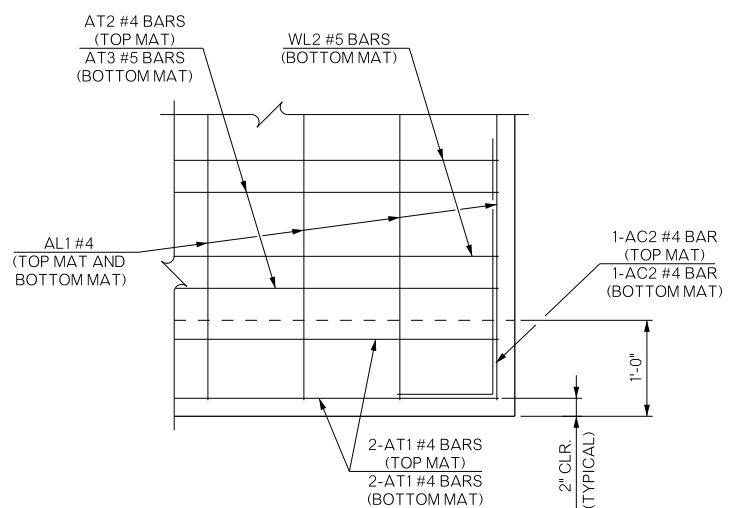
INLET APRON PLAN VIEW

APRON BAR LIST PHASE ONE					
GRADE 60 REINFORCING					
MARK	SIZE	NO.	FORM	LENGTH	REMARKS
AC1	#4	2	BNT.	3'-9"	
AC2	#4	2	BNT.	3'-8"	
AD1	#4	2	STR.	35'-5"	
AL1	#4	52	STR.	28'-0"	
AL2	#4	46	STR.	13'-11" AVG.	2'-11" to 24'-11"
AT1	#4	4	STR.	47'-9"	
AT2	#4	26	STR.	35'-1" AVG.	22'-9" to 47'-5"
AT3	#5	26	STR.	35'-1" AVG.	22'-9" to 47'-5"

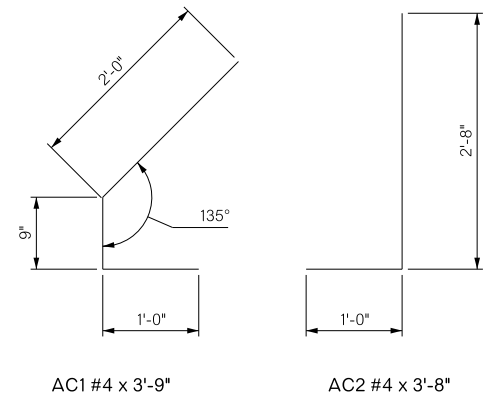
APRON QUANTITIES PHASE ONE		
ITEM	UNIT	TOTAL
CLASS AA CONCRETE	C.Y.	38.00
REINFORCING STEEL	LBS.	3,150.00



DETAIL 'A'



DETAIL 'B'



BAR BENDS

BRIDGE "A" US-277 OVER UNNAMED CREEK	COMANCHE COUNTY	Design	MLC	10/16
DETAILS OF R.C.B. EXTENSION SHEET 4 OF 6		Detail	GLB	10/16
		Check	DAH	04/17
STATE OF OKLAHOMA		Squad	HARJO	
DEPARTMENT OF TRANSPORTATION		Engr:	MOLLA-ESMAIL	
JOB/PIECE NO. 27968(04)	SHEET NO. B005			